

FRAME

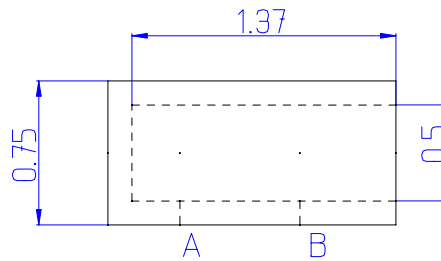
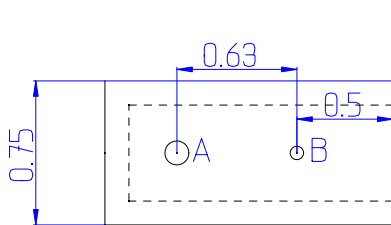
1/2" Aluminum Bar, 1-1/2" x 6"

Hole A. Drill through 1/8"

Hole B (2 places) 3/32" dia x 1/4" deep

Hole C (2 places) 5/32" dia. to meet Hole B. Tap 10-32

Hole D (1). Drill 5/16" dia. through. Insert and Loctite 3/16" brass bushing



CYLINDER BLOCK

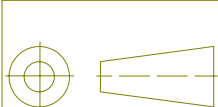
3/4" Aluminum Bar, 1-1/2" x 3/4"

Cylinder 1/2" reamed, 1-3/8" deep

Hole A. 1/8 dia. Drill through into cylinder

Hole B. No. 50 drill through into cylinder. Tap 2-56 short of cylinder wall.

Note: I later made another one, from 1" aluminum round. See writeup. Interior dimensions were as shown on this sheet.



Not to Scale
Not to Scale

Frame
Cylinder Block

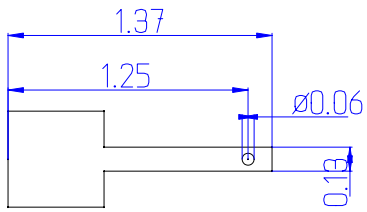
Hand Held Steam Engine
Sheet 1 of 2



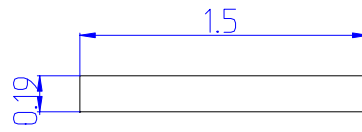
David Goodfellow

1/2/04

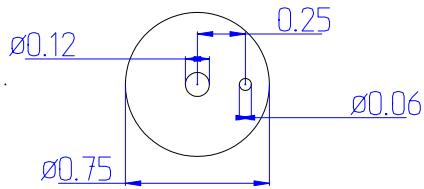
A



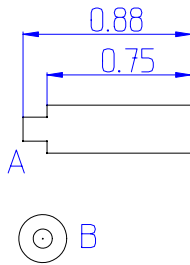
PISTON
1/2" Brass Round



CRANKSHAFT
3/16" Brass Round

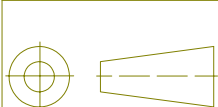


CRANK
Brass Round, 1/8" thick



AIR INTAKE NIPPLE
Brass Round, 1/4" x 7/8"

- A. Turn down to 3/16"; thread 10-32
- B. Drill through No. 46 drill



Not to Scale
Not to Scale
Not to Scale

Piston, Crankshaft
Crank
Air Intake Nipple

Hand Held Steam Engine
Sheet 2 of 2



David Goodfellow

1/2/04

A